

Check Valves.....2

Flow Control Valves4

Needle Valves.....6

AE2 / Two-Way Block Body Threaded8

AB2 / Two-Way Round Body Threaded.....10

AE2OF / Two-Way ORFS Connection12

AE3 / Three-Way Block Body Threaded14

AE3K / “True” Three-Way Block Body Threaded16

AB3 / Three-Way Round Body Threaded18

AES / Two-Way Block Body Flange Head20

ABS / Two-Way Round Body Flange Head22

AEF / Two-Way Block Body Flat Faced24

ABF / Two-Way Round Body Flat Faced26

AEF/S & ABF/S / Two-Way Flange Head X Flat Face28

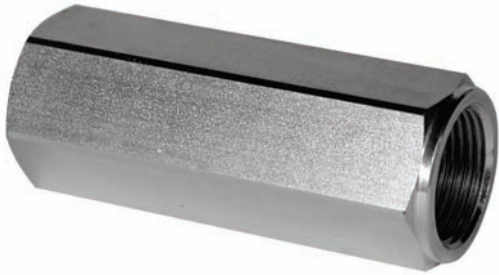
APK / Two-Way Manifold Mount30

Locking Kits.....32

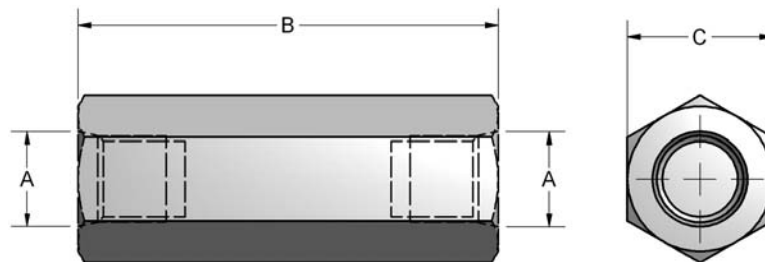
Handles33

LV2B / 1000 WOG Two-Way Stainless Steel.....34

MV2B / 2000 WOG Two-Way Stainless Steel35



- NPT & SAE Connections
- Carbon Steel With Zinc Dichromate Plating
- Available in 7 PSI & 65 PSI Spring Cracking Pressures
- Metal to Metal Seat
- Hardened Poppet
- Optional Restrictor Orifice Available



A		B	C	MAX PSI	Weight (lbs)
NPT	SAE				
1/4"	#4	2.17	.75	5700	.2
3/8"	N/A	2.68	.95	5700	.4
N/A	#6	2.28	.75	5700	.2
1/2"	N/A	2.95	1.06	5700	.5
N/A	#8	2.72	.95	5700	.4
3/4"	#12	3.48	1.38	5700	1.0
1"	#16	4.33	1.61	5000	1.6
1 1/4"	#20	4.72	2.17	5000	3.4
1 1/2"	#24	5.43	2.56	5000	5.6
2"	#32	5.43	2.95	4500	6.7

Model Code Breakdown

C N 1/2 - 1 - 7 - _

Valve Series •

Thread Type •

N	NPT Pipe Thread
S#	SAE Straight Thread
B#	BSP Thread

Thread Size •

Example	N1/2
	S#8

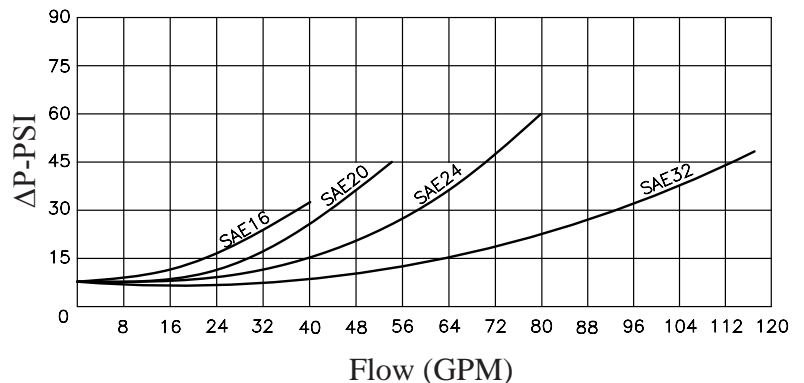
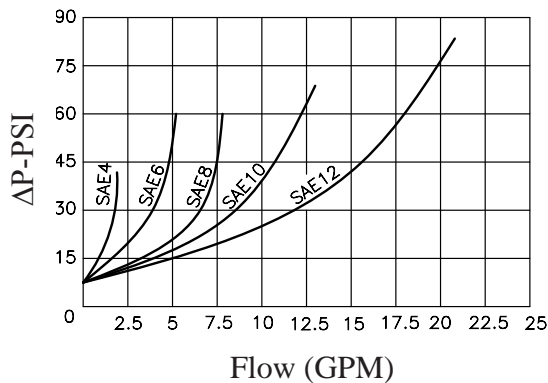
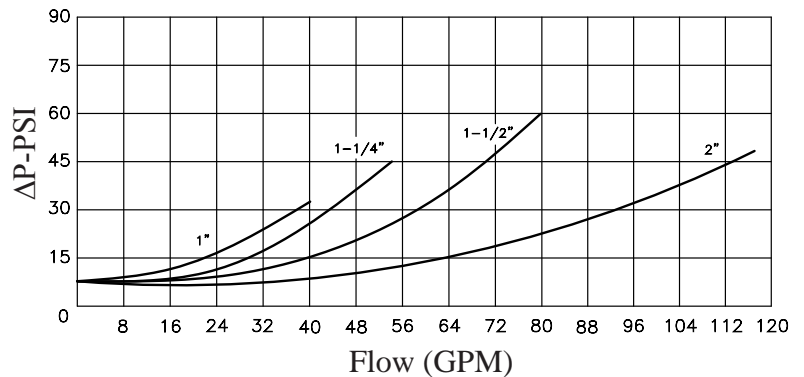
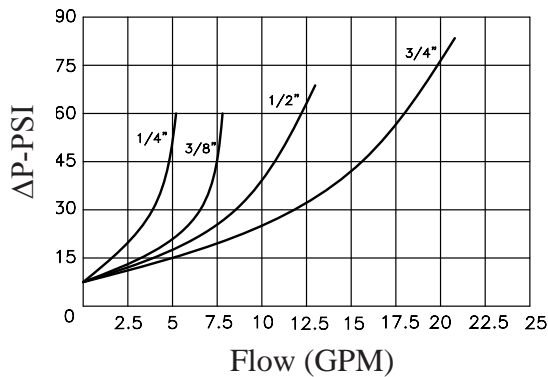
• Optional Restrictor Orifice
(Specify Diameter in Inches)
Example -R.060

• Cracking Pressure

7	7 PSI
65	65 PSI

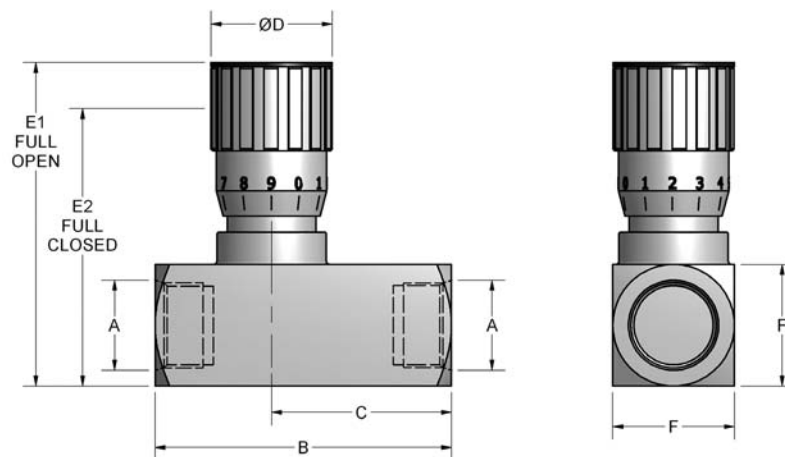
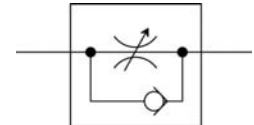
• Material

1	Carbon Steel
---	--------------





- NPT & SAE Connections
- Carbon Steel With Black Oxide Plating
- Set Screw Allows Knob to be Locked into Position
- Graduated Knob & Spindle for Accurate Flow Control
- 7 PSI Standard Spring Setting
- Buna O-Ring / PTFE Stem Packing
- Temperature Range -4°F to +176°F



A		B	C	D	E1	E2	F	MAX PSI	Weight (lbs)
NPT	SAE								
1/4"	#4	2.44	1.46	1.18	3.15	2.76	1.10	5075	.7
3/8"	#6	2.52	1.65	1.18	3.15	2.76	1.10	5075	1.0
1/2"	#8	3.27	2.01	1.46	3.94	3.70	1.50	5075	1.8
3/4"	#12	3.78	2.17	1.46	3.94	3.70	1.50	5075	3.3
1"	#16	4.56	2.80	1.89	5.43	4.96	1.89	5075	4.0
1 1/4"	#20	6.04	3.15	2.28	7.09	6.57	2.36	5075	5.5
1 1/2"	#24	6.75	4.37	3.15	8.50	7.72	2.76	5075	9.9

Model Code Breakdown

F N 1/2 - 1

Valve Series •

• Material

Thread Type •

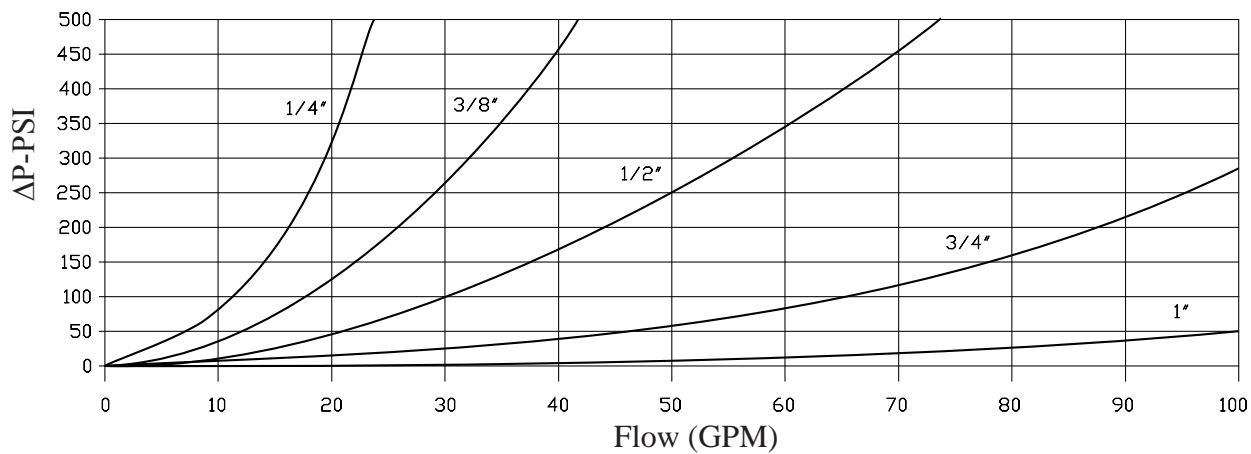
• Thread Size

N	NPT Pipe Thread
S#	SAE Straight Thread
B#	BSPB Thread

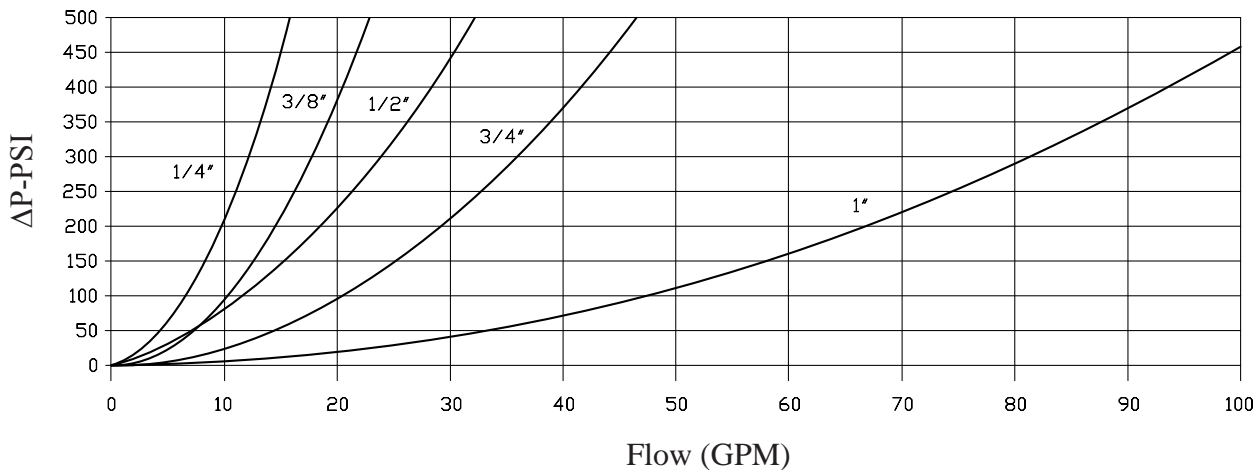
1	Carbon Steel
---	--------------

Example	N1/2
	S#8

FN Series
Free Flow

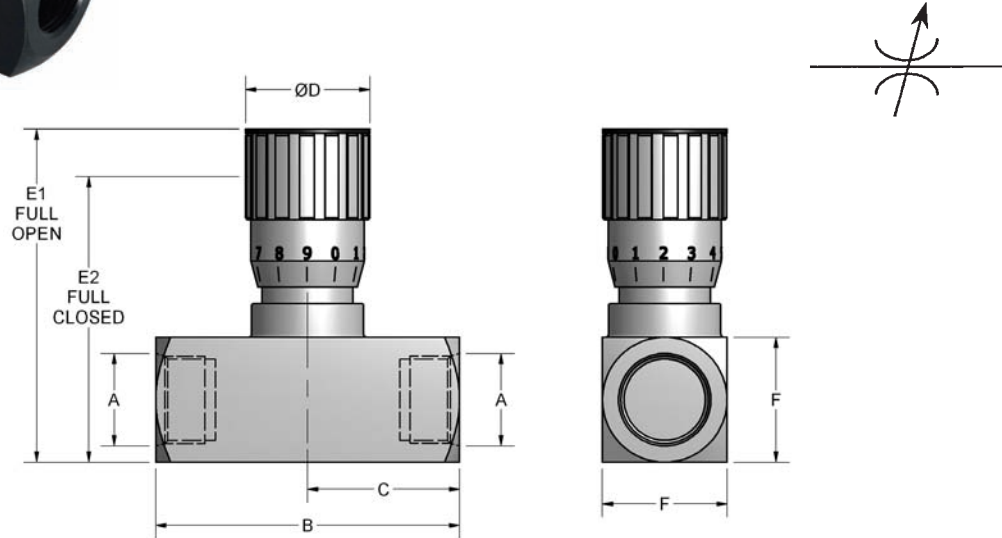


Metered Fully Open





- NPT & SAE Connections
- Carbon Steel With Black Oxide Plating
- Set Screw Allows Knob to be Locked into Position
- Graduated Knob & Spindle for Accurate Flow Control
- Buna O-Ring / PTFE Stem Packing
- Temperature Range -4°F to +176°F



A		B	C	D	E1	E2	F	MAX PSI	Weight (lbs)
NPT	SAE								
1/4"	#4	2.01	.98	1.18	3.15	2.76	1.10	5075	.6
3/8"	#6	2.44	1.10	1.18	3.15	2.76	1.10	5075	.9
1/2"	#8	2.68	1.34	1.46	3.94	3.70	1.50	5075	1.3
3/4"	#12	3.07	1.54	1.46	3.94	3.70	1.50	5075	2.7
1"	#16	3.60	1.81	1.89	5.43	4.96	1.89	5075	3.3
1 1/4"	#20	4.45	2.13	2.28	7.09	6.57	2.36	5075	4.4
1 1/2"	#24	4.80	2.40	3.15	8.50	7.72	2.76	5075	6.6

Model Code Breakdown

N N 1/2 - 1

Valve Series •

• Material

Thread Type •

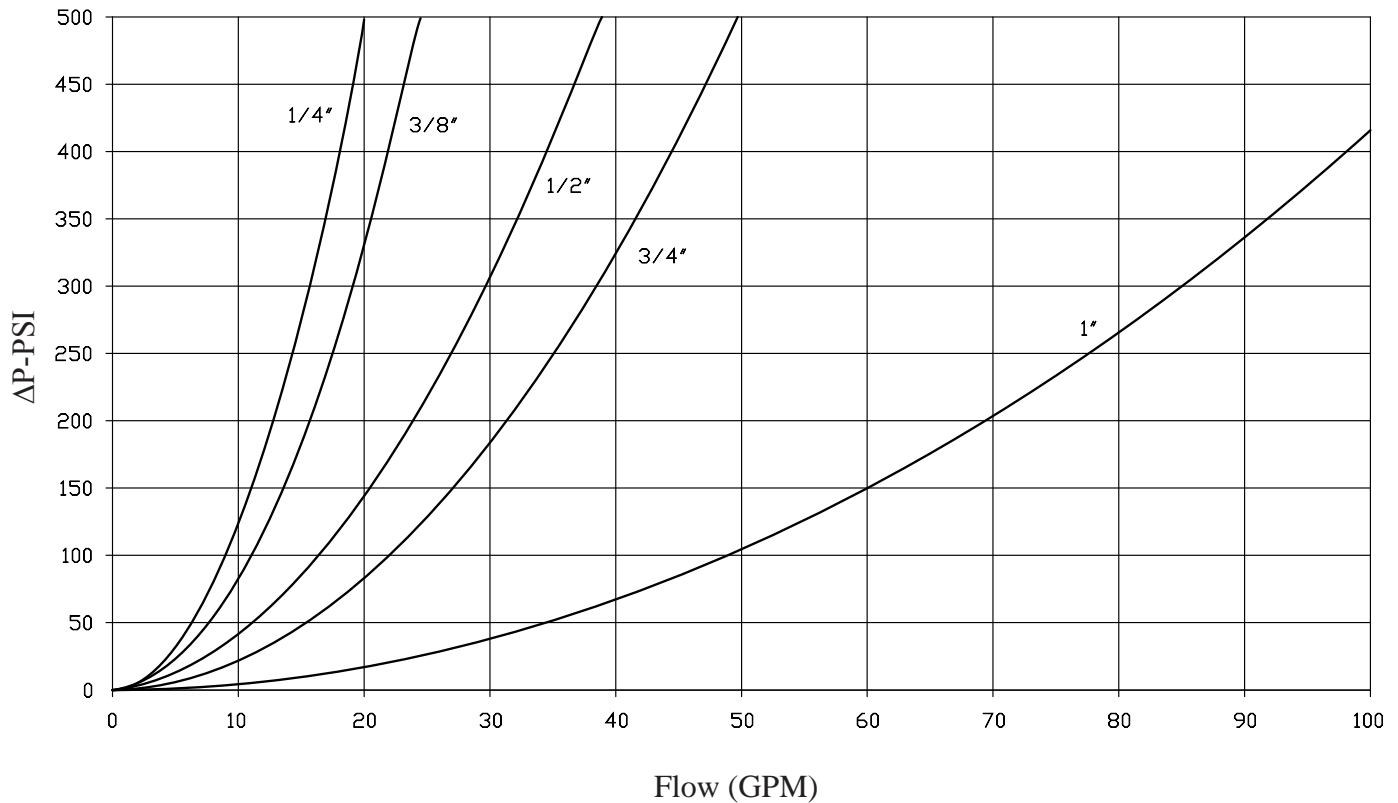
• Thread Size

N	NPT Pipe Thread
S#	SAE Straight Thread
B#	BSP Thread

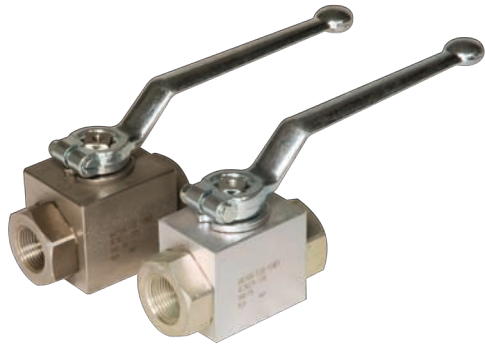
1	Carbon Steel
---	--------------

Example	N1/2
	S#8

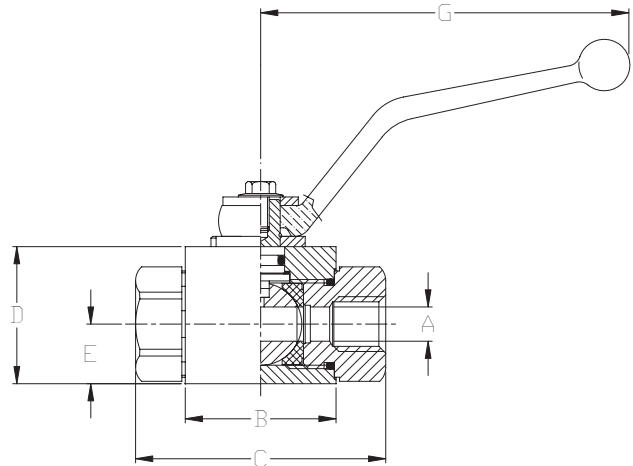
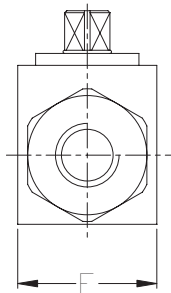
NN Series
Fully Open



AE2 Series / Two-Way Block Body Threaded



- Carbon steel construction with Silver Trivalent plating
- 316 stainless steel available from stock
- Unrestricted bore up to 1" size
- Maximum working pressure of up to 7250 PSI
- POM seats & Buna O-rings standard on carbon steel valves
- Optional seal materials available for extreme temperature applications & fluid compatibility (*Consult Factory*)



Standard handles supplied are:
Refer to page 33 for details.

1/8" - 1/2"

C1010ZB

3/4" - 1 1/2"

C1200ZB

	SERIES		PSI Max	A Bore	B	C	D		F		G	Weight	
	NPT	SAE					Carbon	Stainless	Carbon	Stainless			
Full Bore	AE2 N1/8	N/A	7250	.16	1.65	2.80	1.38	C/F	.55	1.18	C/F	4.33	1.1 lbs
	AE2 N1/4	AE2 S#4	7250	.24	1.65	2.80	1.38	1.38	.55	1.18	1.38	4.33	1.1 lbs
	AE2 N3/8	AE2 S#6	7250	.39	1.73	2.87	1.57	1.57	.67	1.38	1.57	4.33	1.4 lbs
	AE2 N1/2	AE2 S#8	7250	.51	1.89	3.27	1.69	1.77	.71	1.46	1.77	4.33	1.7 lbs
	AE2 N3/4	AE2 S#12	5800	.79	2.44	3.74	2.17	2.17	.91	1.77	2.17	7.09	3.1 lbs
	AE2 N1	AE2 S#16	5075	.98	2.60	4.45	2.56	2.56	1.14	2.17	2.56	7.09	4.7 lbs
Reduced Bore	AE2 N1-1/4R	AE2 S#20R	5075	.98	2.60	4.76	2.56	2.56	1.14	2.17	2.56	7.09	5.0 lbs
	AE2 N1-1/2R	AE2 S#24R	5075	.98	2.60	4.88	2.56	2.56	1.14	2.17	2.56	7.09	5.2 lbs

NPT threads in accordance with ANSI B.1.20.1 specifications.

SAE threads in accordance with SAE J1926/1 specifications.

Model Code Breakdown

AE2 N1/2 _ - 1 1 D B _

Valve Series •

Connection Type/Size •

N	NPT Pipe Thread
S	SAE Straight Thread
B	BSPP Thread

Bore Restriction •

blank	Unrestricted Bore
R	Restricted Bore

Body & Adapter Material •

1	Carbon Steel
2	316 Stainless Steel

Ball & Stem Material •

1	Carbon Steel
2	316 Stainless Steel

• Locking Kit or
Optional Handle Code
(See pages 32 & 33)

• Adapter & Stem Seals

B	Buna- Standard
V	Viton (Std on S/S)

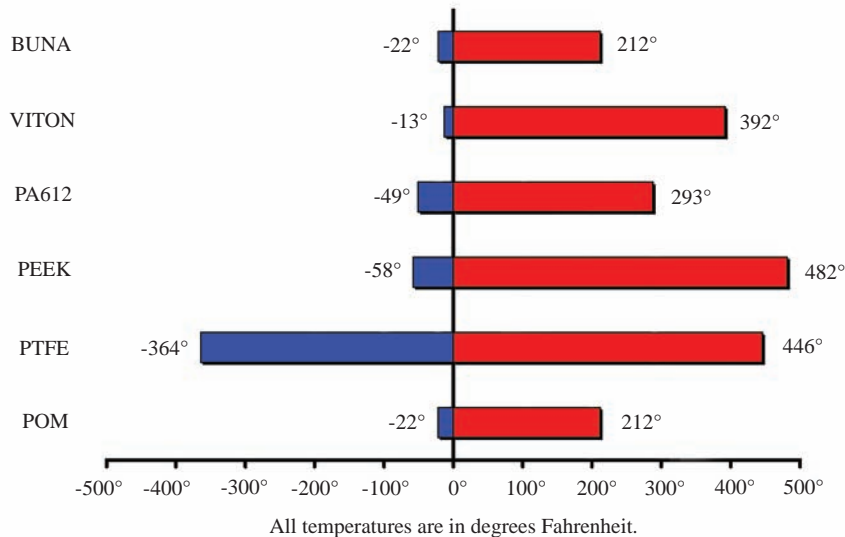
• Ball & Stem Seats

D	POM- Standard
P	PEEK
N	PA612
X	PTFE w/metallic insert

- PTFE seats reduce pressure ratings. Consult factory for applications requiring PTFE seats.

- Please consult your system's seal manufacturer for recommendation of seal selection, as Anchor Fluid Power does not accept responsibility for seal selection.

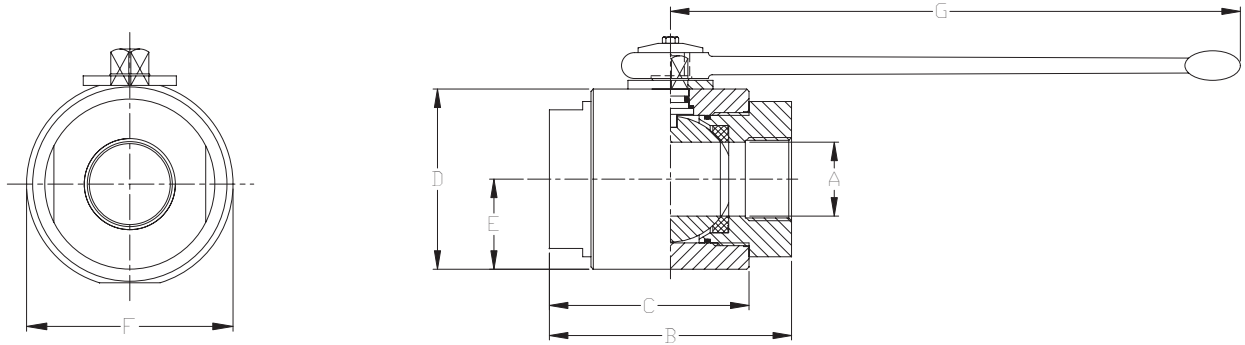
MAXIMUM & MINIMUM WORKING TEMPERATURES FOR SEAL MATERIALS



AB2 Series / Two-Way Round Body Threaded



- Carbon steel construction with Silver Trivalent plating
- 316 stainless steel available from stock
- Maximum working pressure of 5075 PSI
- Unrestricted bore available through 2" size
- POM seats & Buna O-rings standard on carbon steel valves
- Optional seal materials available for extreme temperature applications & fluid compatibility (*Consult Factory*)



Standard handle supplied is C81302B. Refer to page 33 for details.

	SERIES		PSI Max	A Bore	B	C	D	E	F	G	Weight
	NPT	SAE									
Full Bore	AB2 N1-1/4	AB2 S#20	5075	1.26	4.53	3.74	3.66	1.83	3.88	11.69	8.3 lbs
	AB2 N1-1/2	AB2 S#24	5075	1.57	5.16	4.25	4.21	2.11	4.45	11.69	12.5 lbs
	AB2 N2	AB2 S#32	5075	1.97	5.51	4.53	4.49	2.24	4.84	11.69	14.6 lbs
Reduced Bore	AB2N2R	N/A	5075	1.57	5.16	4.25	3.86	1.89	4.02	11.69	13.5 lbs

NPT threads in accordance with ANSI B.1.20.1 specifications.

SAE threads in accordance with SAE J1926/1 specifications.

Model Code Breakdown

AB2 N1/2 _ - 1 1 D B _

Valve Series •

Connection Type/Size •

N	NPT Pipe Thread
S	SAE Straight Thread
B	BSPP Thread

Bore Restriction •

blank	Unrestricted Bore
R	Restricted Bore

Body & Adapter Material •

1	Carbon Steel
2	316 Stainless Steel

Ball & Stem Material •

1	Carbon Steel
2	316 Stainless Steel

• Locking Kit or
Optional Handle Code
(See pages 32 & 33)

• Adapter & Stem Seals

B	Buna- Standard
V	Viton (Std on S/S)

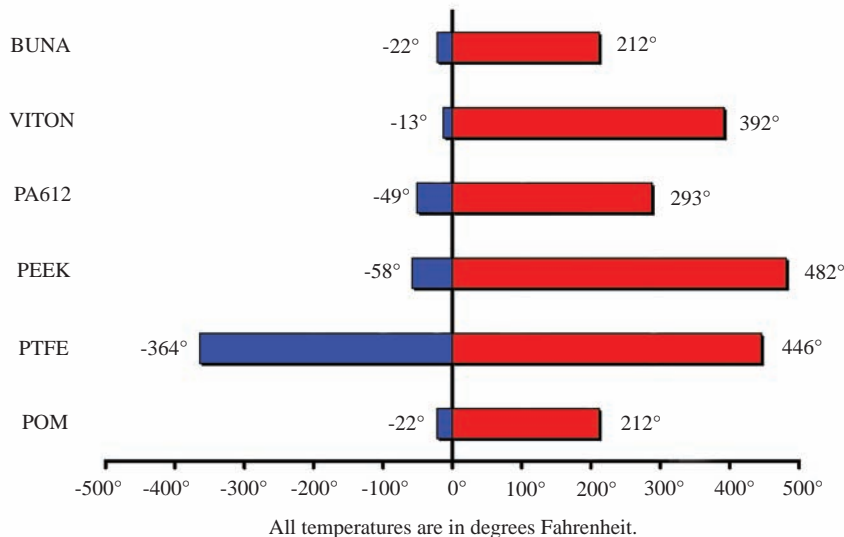
• Ball & Stem Seats

D	POM- Standard
P	PEEK
N	PA612
X	PTFE w/metallic insert

- PTFE seats reduce pressure ratings. Consult factory for applications requiring PTFE seats.

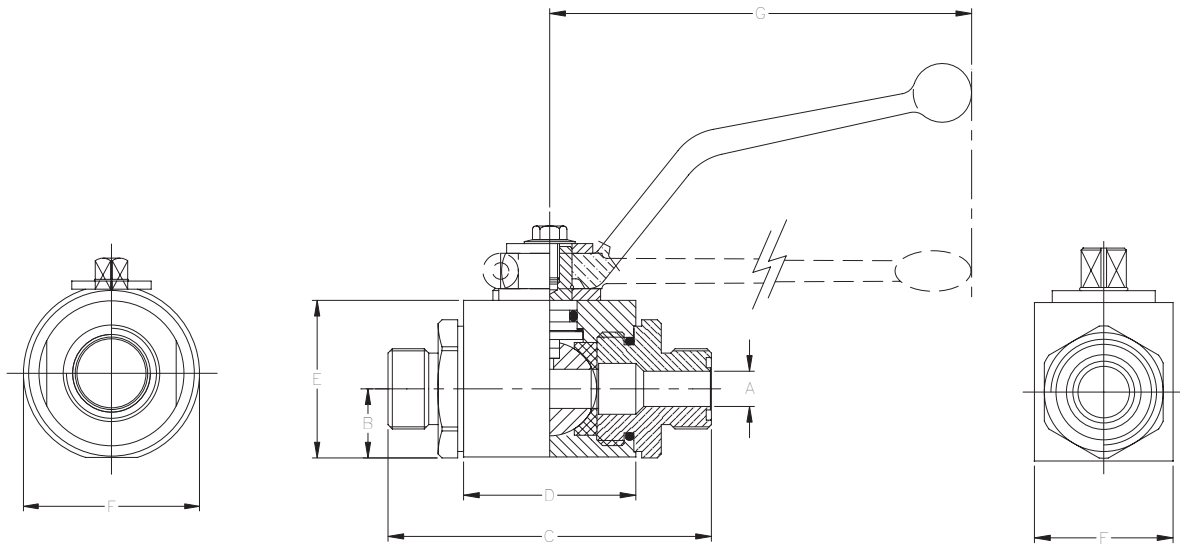
- Please consult your system's seal manufacturer for recommendation of seal selection, as Anchor Fluid Power does not accept responsibility for seal selection.

MAXIMUM & MINIMUM WORKING TEMPERATURES FOR SEAL MATERIALS





- Male ORFS SAE J1453 connection eliminates leak points and costly fittings while reducing overall valve length
- Carbon steel construction with Zinc Dichromate plating
- Maximum working pressure of up to 7250 PSI
- POM seats & Buna O-rings standard on carbon steel valves
- Optional seal materials available for extreme temperature applications & fluid compatibility (*Consult Factory*)



Standard handles supplied are:

1/2"

C1010ZB

3/4" - 1"

C1200ZB

Refer to page 33 for details.

1-1/4" - 1-1/2"

C81302B

SERIES	PSI Max	A Bore	B	C	D	E	F	G
AE2OF#8	7250	.51	.71	3.37	1.89	1.69	1.46	4.31
AE2OF#12	5800	.79	.91	4.89	2.44	2.17	1.77	7.00
AE2OF#16	5075	.98	1.14	5.13	2.60	2.56	2.17	7.00
AB2OF#20	5075	1.02	1.62	4.92	2.95	3.25	3.46	11.69
AB2OF#24	5075	1.26	1.67	6.15	3.35	3.84	4.02	11.69

Model Code Breakdown

AE2OF #12 - 1 1 D B

Valve Series •

AE2OF	Block Body ORFS
AB2OF	Round Body ORFS

Connection Size •

Body & Adapter Material •

1	Carbon Steel
2	316 Stainless Steel

Ball & Stem Material •

1	Carbon Steel
2	316 Stainless Steel

• Locking Kit or
Optional Handle Code
(See pages 32 & 33)

• Adapter & Stem Seals

B	Buna- Standard
V	Viton (Std on S/S)

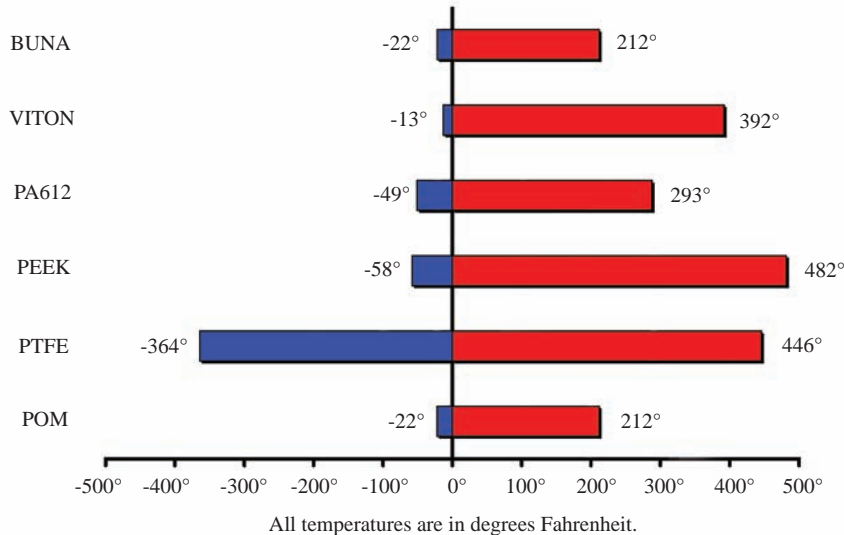
• Ball & Stem Seats

D	POM- Standard
P	PEEK
N	PA612
X	PTFE w/metallic insert

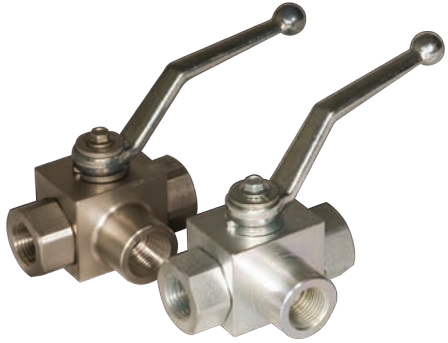
- PTFE seats reduce pressure ratings. Consult factory for applications requiring PTFE seats.

- Please consult your system's seal manufacturer for recommendation of seal selection, as Anchor Fluid Power does not accept responsibility for seal selection.

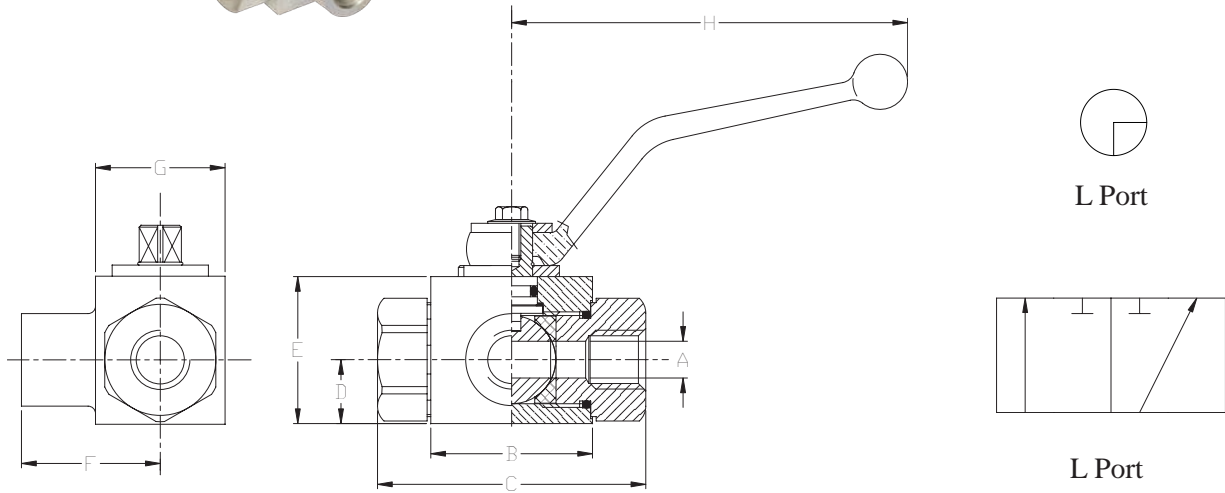
MAXIMUM & MINIMUM WORKING TEMPERATURES FOR SEAL MATERIALS



AE3 Series / Three-Way Block Body Threaded



- Carbon steel construction with Silver Trivalent plating
- 316 stainless steel available from stock
- Maximum working pressure of up to 5800 PSI
- POM seats & Buna O-rings standard on carbon steel valves
- Optional seal materials available for extreme temperature applications & fluid compatibility (*Consult Factory*)



Standard handles supplied are:
Refer to page 33 for details.

1/8" - 1/2"
3/4" - 1 1/2"

C1010ZB
C1200ZB

	SERIES											
	NPT	SAE	PSI Max	A Bore	B	C	D	E	F	G	H	Weight
Full Bore	AE3 L N1/8	N/A	5800	.16	1.65	2.80	.55	1.38	1.32	1.18	4.31	1.1 lbs
	AE3 L N1/4	AE3 L S#4	5800	.24	1.65	2.80	.55	1.38	1.32	1.18	4.31	1.1 lbs
	AE3 L N3/8	AE3 L S#6	5800	.39	1.73	2.87	.67	1.57	1.46	1.38	4.31	1.5 lbs
	AE3 L N1/2	AE3 L S#8	5075	.51	1.89	3.27	.71	1.69	1.57	1.46	4.31	1.8 lbs
	AE3 L N3/4	AE3 L S#12	5075	.79	2.44	3.74	.91	2.17	2.05	1.77	7.00	3.3 lbs
	AE3 L N1	AE3 L S#16	5075	.98	2.60	4.45	1.14	2.56	2.36	2.17	7.00	5.2 lbs
Reduced Bore	AE3 L N1-1/4R	AE3 L S#20R	5075	.98	2.60	4.76	1.14	2.56	2.42	2.17	7.00	5.5 lbs
	AE3 L N1-1/2R	AE3 L S#24R	5075	.98	2.60	4.88	1.14	2.56	2.42	2.17	7.00	6.0 lbs

Only pressurize center port. Side ports should not be pressurized or be exposed to backpressure that is greater than the inlet pressure. Failure to follow these guidelines will result in internal leakage through the valve. For applications requiring pressure applied to side ports, please refer to AE3K Series valves on page 16.

*NPT threads in accordance with ANSI B.1.20.1 specifications.
SAE threads in accordance with SAE J1926/1 specifications.*

Model Code Breakdown

AE3L N1/2 - 1 1 D B -

Valve Series •

Port Type •

L	“Diverter” L-Port
---	-------------------

Connection Type/Size •

N	NPT Pipe Thread
S	SAE Straight Thread

Bore Restriction •

blank	Unrestricted Bore
R	Restricted Bore

Body & Adapter Material •

1	Carbon Steel
2	316 Stainless Steel

Ball & Stem Material •

1	Carbon Steel
2	316 Stainless Steel

• Locking Kit or
Optional Handle Code
(See pages 32 & 33)

• Adapter & Stem Seals

B	Buna- Standard
V	Viton (Std on S/S)

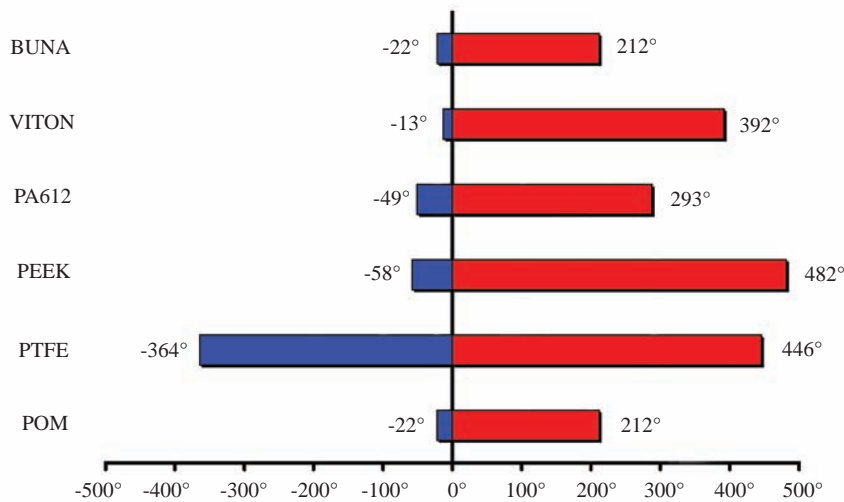
• Ball & Stem Seats

D	POM- Standard
P	PEEK
N	PA612
X	PTFE w/metallic insert

- PTFE seats reduce pressure ratings. Consult factory for applications requiring PTFE seats.

- Please consult your system’s seal manufacturer for recommendation of seal selection, as Anchor Fluid Power does not accept responsibility for seal selection.

MAXIMUM & MINIMUM WORKING TEMPERATURES FOR SEAL MATERIALS

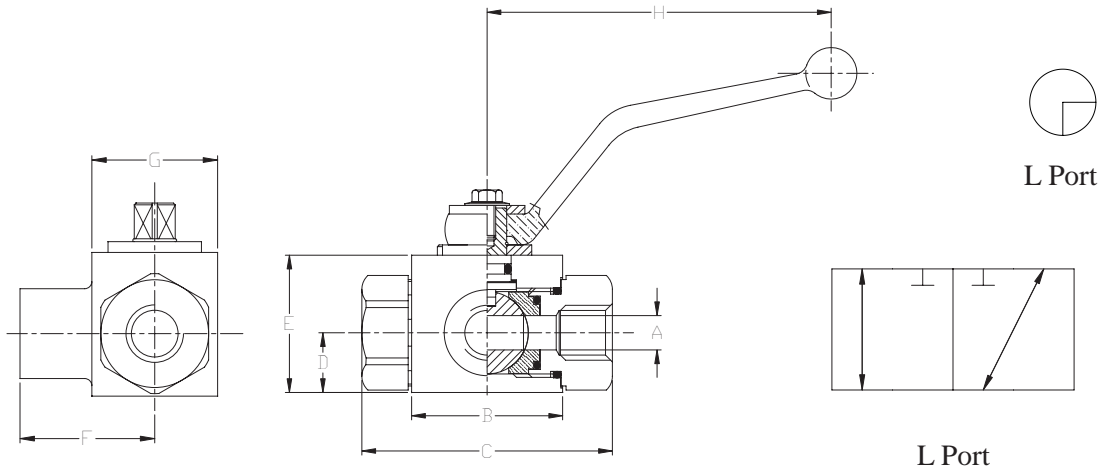


All temperatures are in degrees Fahrenheit.

AE3K Series / Three-Way Block Body Threaded



- Any port may be pressurized on this series valve (“True” 3-way valve)
- Carbon steel construction with Silver Trivalent plating
- Maximum working pressure of up to 5800 PSI
- POM seats & Buna O-rings standard on carbon steel valves
- Optional seal materials available for extreme temperature applications & fluid compatibility (*Consult Factory*)



Standard handles supplied are:
Refer to page 33 for details.

1/8" - 1/2"
3/4" - 1"

C1010ZB
C1200ZB

SERIES		PSI Max	A Bore	B	C	D	E	F	G	H	Weight	
NPT	SAE											
Full Bore	AE3K L N1/4	AE3K L S#4	5800	.24	1.65	2.80	.55	1.38	1.32	1.18	4.31	1.1 lbs
	AE3K L N3/8	AE3K L S#6	5800	.39	1.73	2.87	.67	1.57	1.46	1.38	4.31	1.5 lbs
	AE3K L N1/2	AE3K L S#8	5075	.51	1.89	3.27	.71	1.69	1.57	1.46	4.31	1.8 lbs
	AE3K L N3/4	AE3K L S#12	5075	.79	2.44	3.74	.91	2.17	2.05	1.77	7.00	3.3 lbs
	AE3K L N1	AE3K L S#16	5075	.98	2.60	4.45	1.14	2.56	2.36	2.17	7.00	5.2 lbs

NPT threads in accordance with ANSI B.1.20.1 specifications.
SAE threads in accordance with SAE J1926/1 specifications.

Model Code Breakdown

AE3KL N1/2 _ - 1 1 D B _

Valve Series •

Port Type •

L	“Diverter” L-Port
---	-------------------

Connection Type/Size •

N	NPT Pipe Thread
S	SAE Straight Thread

Bore Restriction •

blank	Unrestricted Bore
R	Restricted Bore

Body & Adapter Material •

1	Carbon Steel
---	--------------

Ball & Stem Material •

1	Carbon Steel
---	--------------

• Locking Kit or
Optional Handle Code
(See pages 32 & 33)

• Adapter & Stem Seals

B	Buna- Standard
---	----------------

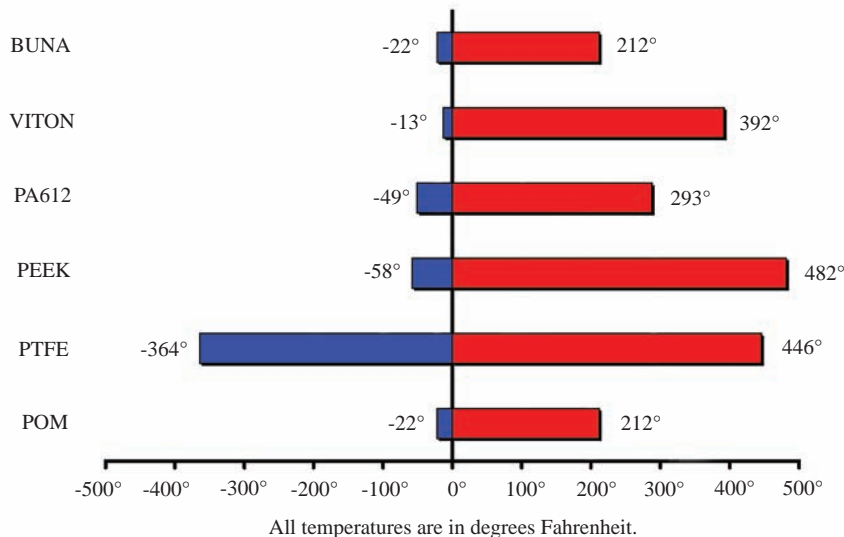
• Ball & Stem Seats

D	POM- Standard
P	PEEK
N	PA612
X	PTFE w/metallic insert

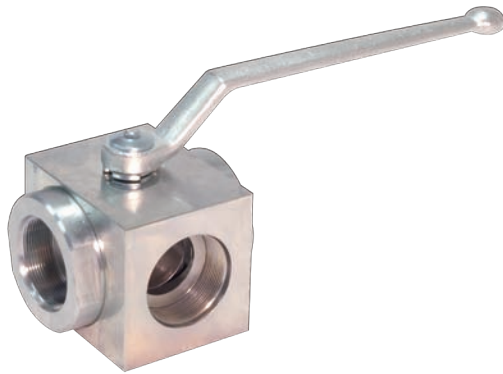
- PTFE seats reduce pressure ratings. Consult factory for applications requiring PTFE seats.

- Please consult your system’s seal manufacturer for recommendation of seal selection, as Anchor Fluid Power does not accept responsibility for seal selection.

MAXIMUM & MINIMUM WORKING TEMPERATURES FOR SEAL MATERIALS



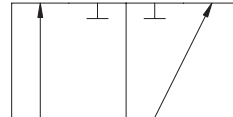
AB3 Series / Three-Way Round Body Threaded



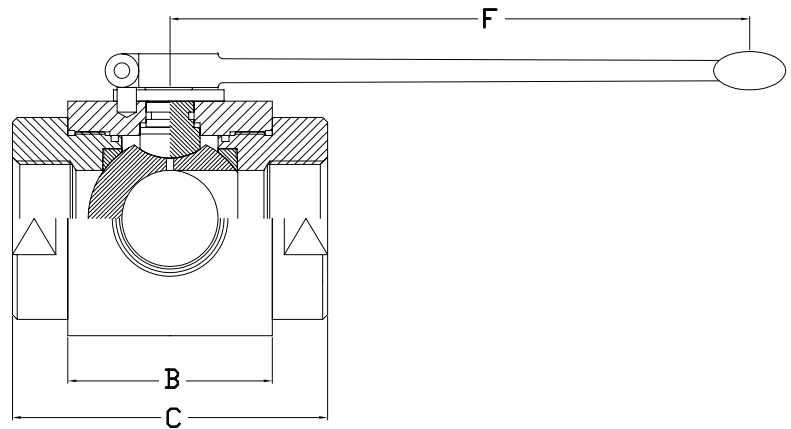
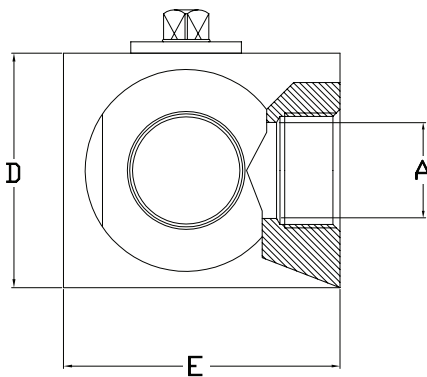
- Carbon steel construction with Silver Trivalent plating
- Maximum working pressure of 5075 PSI
- POM seats & Buna O-rings standard on carbon steel valves
- Optional seal materials available for extreme temperature applications & fluid compatibility (*Consult Factory*)



L Port



L Port



Standard handle supplied is C81302B. Refer to page 33 for details.

	SERIES		PSI Max	A Bore	B	C	D	E	F	Weight
	NPT	SAE								
Full Bore	AB3 L N1-1/4	AB3 L S#20	5075	1.26	2.96	4.53	3.66	3.90	11.81	11.7 lbs
	AB3 L N1-1/2	AB3 L S#24	5075	1.57	3.35	5.16	4.21	4.53	11.81	16.1 lbs
	AB3 L N2	AB3 L S#32	5075	1.89	3.86	5.51	4.49	5.04	11.81	20.2 lbs

Only pressurize center port. Side ports should not be pressurized or be exposed to backpressure that is greater than the inlet pressure. Failure to follow these guidelines will result in internal leakage through the valve.

NPT threads in accordance with ANSI B.1.20.1 specifications.

SAE threads in accordance with SAE J1926/1 specifications.

Model Code Breakdown

AB3L N1 1/2 - 1 1 D B _

Valve Series •

Port Type •

L	“Diverter” L-Port
---	-------------------

Connection Type/Size •

N	NPT Pipe Thread
S	SAE Straight Thread

Body & Adapter Material •

1	Carbon Steel
2	316 Stainless Steel

Ball & Stem Material •

1	Carbon Steel
2	316 Stainless Steel

• Locking Kit or
Optional Handle Code
(See pages 32 & 33)

• Adapter & Stem Seals

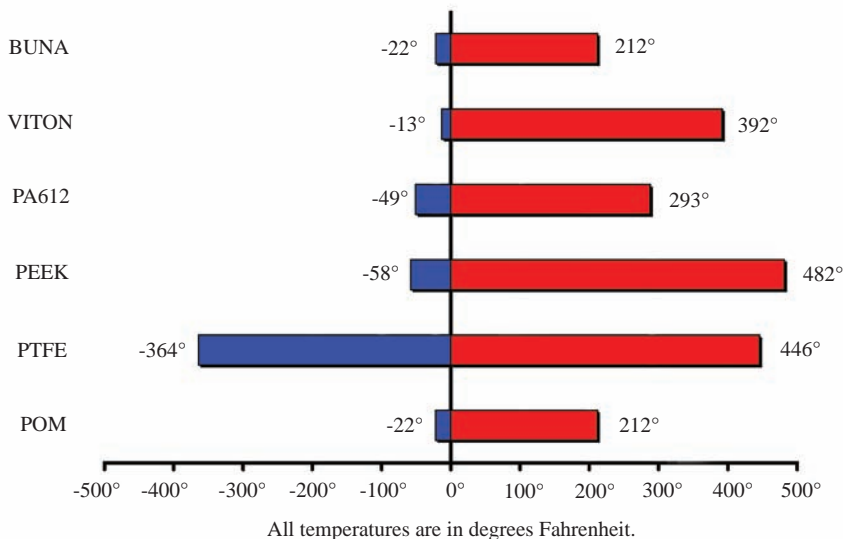
B	Buna- Standard
V	Viton (Std on S/S)

• Ball & Stem Seats

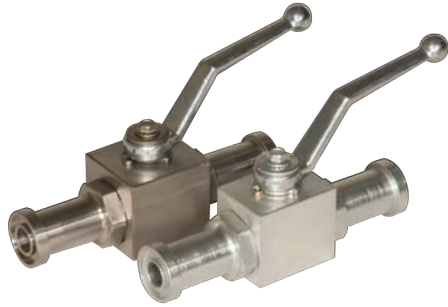
D	POM- Standard
P	PEEK
N	PA612
X	PTFE w/metallic insert

- PTFE seats reduce pressure ratings. Consult factory for applications requiring PTFE seats.
- Please consult your system’s seal manufacturer for recommendation of seal selection, as Anchor Fluid Power does not accept responsibility for seal selection.

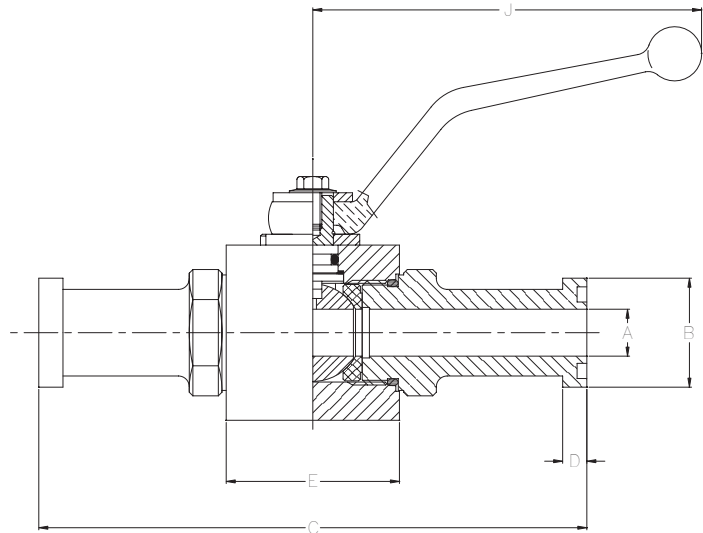
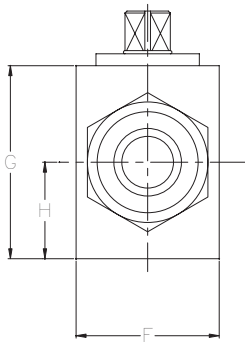
MAXIMUM & MINIMUM WORKING TEMPERATURES FOR SEAL MATERIALS



AES Series / Two-Way Block Body Flange Head



- Carbon steel construction with Silver Trivalent plating
- 316 stainless steel available from stock
- Maximum working pressure of up to 6000 PSI
- POM seats & Buna O-rings standard on carbon steel valves
- Optional seal materials available for extreme temperature applications & fluid compatibility (*Consult Factory*)



Standard handles supplied are:
Refer to page 33 for details.

#8
#12 & #16

C1010ZB
C1200ZB

	SERIES	PSI Max	A Bore	B	C	D	E	F	G	H	J	Weight
								Carbon Stainless	Carbon Stainless			
CODE 61	AES3#8	5000	.51	1.19	5.94	.27	1.89	1.69 1.77	1.46 1.77	.71	4.31	2.1 lbs
	AES3#12	5000	.75	1.50	6.38	.27	2.44	2.17 2.17	1.77 2.17	.91	7.00	3.7 lbs
	AES3#16	5000	.98	1.75	7.00	.32	2.60	2.56 2.56	2.17 2.56	1.14	7.00	5.5 lbs
CODE 62	AES6#8	6000	.51	1.25	5.94	.31	1.89	1.69 1.77	1.46 1.77	.71	4.31	2.1 lbs
	AES6#12	6000	.75	1.63	6.85	.35	2.44	2.17 2.17	1.77 2.17	.91	7.00	3.9 lbs
	AES6#16	5000	.98	1.87	7.80	.38	2.60	2.56 2.56	2.17 2.56	1.14	7.00	5.9 lbs

Model Code Breakdown

AES3 #16 - 1 1 D B

Valve Series •

AES3	Code 61
AES6	Code 62

Connection Size •

Body & Adapter Material •

1	Carbon Steel
2	316 Stainless Steel

Ball & Stem Material •

1	Carbon Steel
2	316 Stainless Steel

• Locking Kit or
Optional Handle Code
(See pages 32 & 33)

• Adapter & Stem Seals

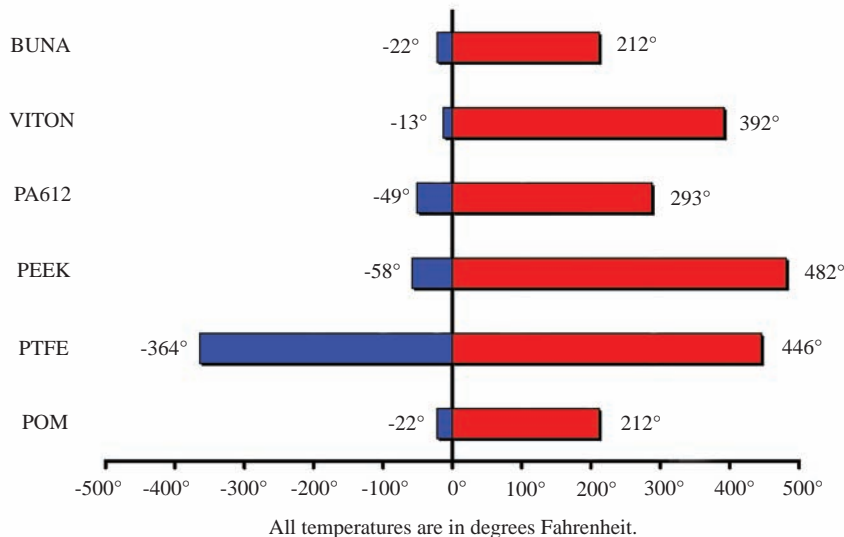
B	Buna- Standard
V	Viton (Std on S/S)

• Ball & Stem Seats

D	POM- Standard
P	PEEK
N	PA612
X	PTFE w/metallic insert

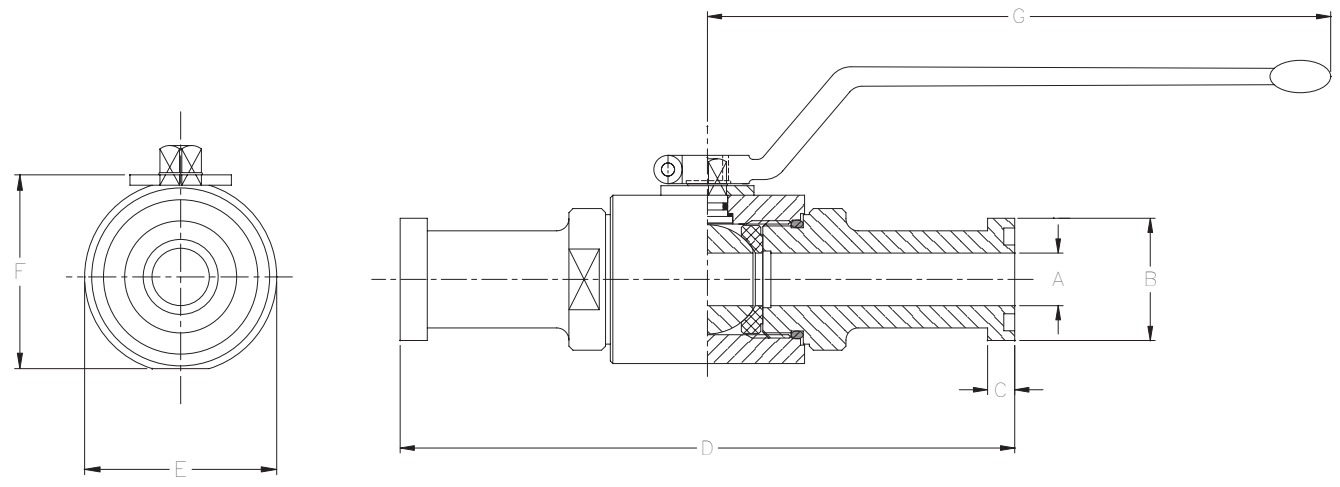
- PTFE seats reduce pressure ratings. Consult factory for applications requiring PTFE seats.
- Please consult your system's seal manufacturer for recommendation of seal selection, as Anchor Fluid Power does not accept responsibility for seal selection.

MAXIMUM & MINIMUM WORKING TEMPERATURES FOR SEAL MATERIALS





- Carbon steel construction with Silver Trivalent plating
- 316 stainless steel available from stock
- Maximum working pressure of up to 5000 PSI
- POM seats & Buna O-rings standard on carbon steel valves
- Optional seal materials available for extreme temperature applications & fluid compatibility (*Consult Factory*)



Standard handle supplied is C92501Z. Refer to page 33 for details.

	SERIES	PSI Max	A Bore	B	C	D	E	F	G	Weight
CODE 61	ABS3#20	4000	1.18	2.00	.32	7.52	3.88	3.66	12.31	9.2 lbs
	ABS3#24	3000	1.42	2.37	.32	9.10	4.45	4.21	12.31	15.1 lbs
	ABS3#32	3000	1.89	2.81	.38	9.13	4.84	4.49	12.31	16.5 lbs
CODE 62	ABS6#20	5000	1.06	2.13	.41	8.78	3.88	3.66	12.31	10.1 lbs
	ABS6#24	5000	1.26	2.50	.50	11.06	4.84	4.21	12.31	15.1 lbs
	ABS6#32	5000	1.77	3.13	.50	12.44	3.88	4.49	12.31	20.6 lbs

Model Code Breakdown

ABS3 #32 - 1 1 D B

Valve Series •

ABS3	Code 61
ABS6	Code 62

Connection Size •

Body & Adapter Material •

1	Carbon Steel
2	316 Stainless Steel

Ball & Stem Material •

1	Carbon Steel
2	316 Stainless Steel

**• Locking Kit or
Optional Handle Code
(See pages 32 & 33)**

• Adapter & Stem Seals

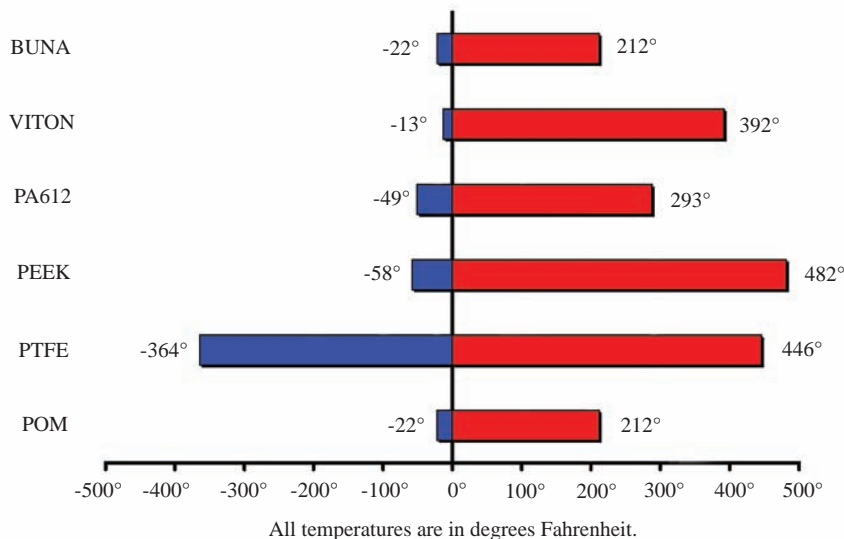
B	Buna- Standard
V	Viton (Std on S/S)

• Ball & Stem Seats

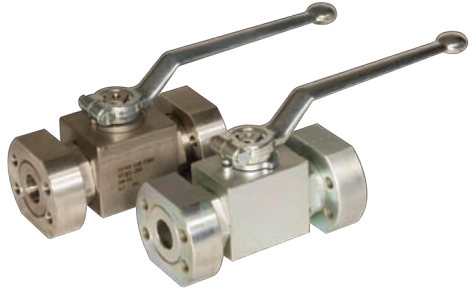
D	POM- Standard
P	PEEK
N	PA612
X	PTFE w/metallic insert

- PTFE seats reduce pressure ratings. Consult factory for applications requiring PTFE seats.
- Please consult your system's seal manufacturer for recommendation of seal selection, as Anchor Fluid Power does not accept responsibility for seal selection.

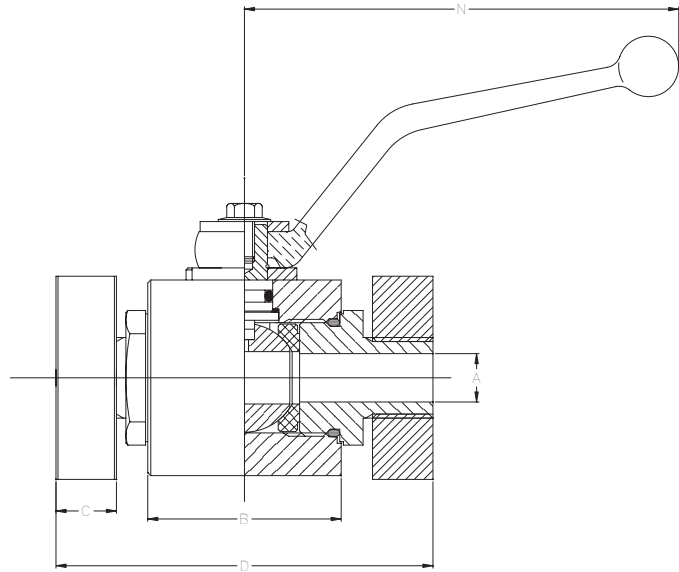
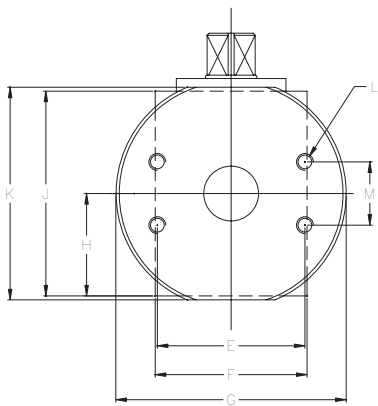
MAXIMUM & MINIMUM WORKING TEMPERATURES FOR SEAL MATERIALS



AEF Series / Two-Way Block Body Flat Face



- Carbon steel construction with Silver Trivalent plating
- 316 stainless steel available from stock
- Maximum working pressure of up to 6000 PSI
- POM seats & Buna O-rings standard on carbon steel valves
- Optional seal materials available for extreme temperature applications & fluid compatibility (*Consult Factory*)



Standard handles supplied are:
Refer to page 33 for details.

#8
#12 - #16

C1010ZB
C1200ZB

	SERIES	PSI Max	A Bore	B	C	D	E	F		G	H	J		K	L	M	N	Weight
								Carbon	Stainless			Carbon	Stainless					
CODE 61	AEF3#8	5000	.51	1.89	.87	4.72	1.50	1.46	1.77	2.20	.71	1.69	1.77	1.89	5/16-18	.69	4.31	4.6 lbs
	AEF3#12	5000	.79	2.49	.91	5.35	1.87	1.77	2.17	2.83	.91	2.17	2.17	2.36	3/8-16	.87	7.00	6.6 lbs
	AEF3#16	5000	.98	2.60	1.06	5.83	2.06	2.17	2.56	3.19	1.14	2.56	2.56	2.76	3/8-16	1.03	7.00	7.6 lbs
CODE 62	AEF6#8	6000	.51	1.89	.87	4.72	1.59	1.46	1.77	2.20	.71	1.69	1.77	1.89	5/16-18	.72	4.31	4.6 lbs
	AEF6#12	6000	.79	2.49	.91	5.35	2.00	1.77	2.17	2.83	.91	2.17	2.17	2.36	3/8-16	.94	7.00	6.6 lbs
	AEF6#16	5000	.98	2.60	1.06	5.83	2.25	2.17	2.56	3.19	1.14	2.56	2.56	2.76	7/16-14	1.09	7.00	7.6 lbs

Model Code Breakdown

AEF3 #16 - 1 1 D B

Valve Series •

AEF3	Code 61
AEF6	Code 62

Connection Size •

Body & Adapter Material •

1	Carbon Steel
2	316 Stainless Steel

Ball & Stem Material •

1	Carbon Steel
2	316 Stainless Steel

• Locking Kit or
Optional Handle Code
(See pages 32 & 33)

• Adapter & Stem Seals

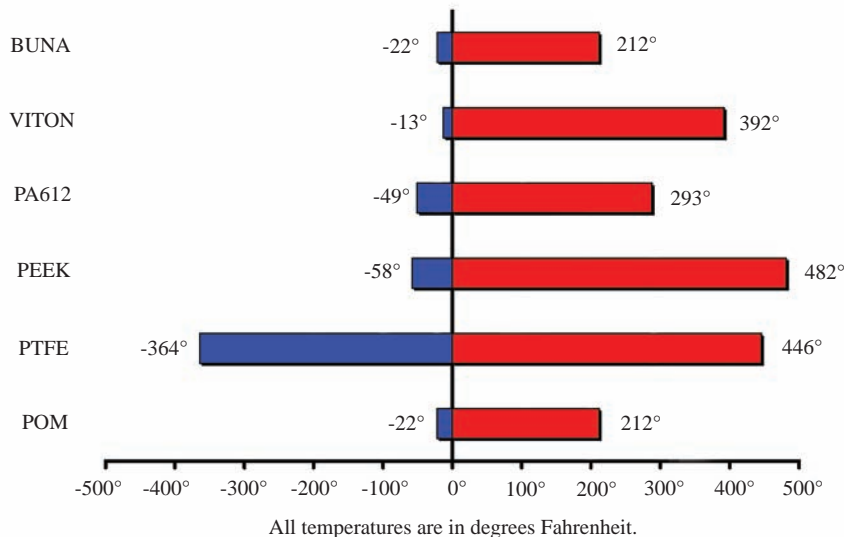
B	Buna- Standard
V	Viton (Std on S/S)

• Ball & Stem Seats

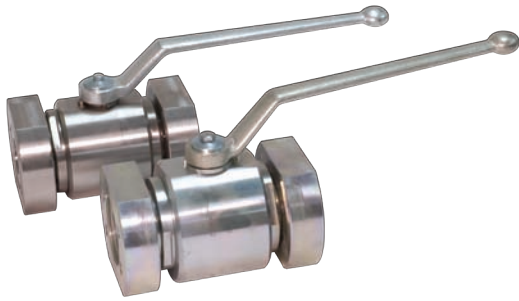
D	POM- Standard
P	PEEK
N	PA612
X	PTFE w/metallic insert

- PTFE seats reduce pressure ratings. Consult factory for applications requiring PTFE seats.
- Please consult your system's seal manufacturer for recommendation of seal selection, as Anchor Fluid Power does not accept responsibility for seal selection.

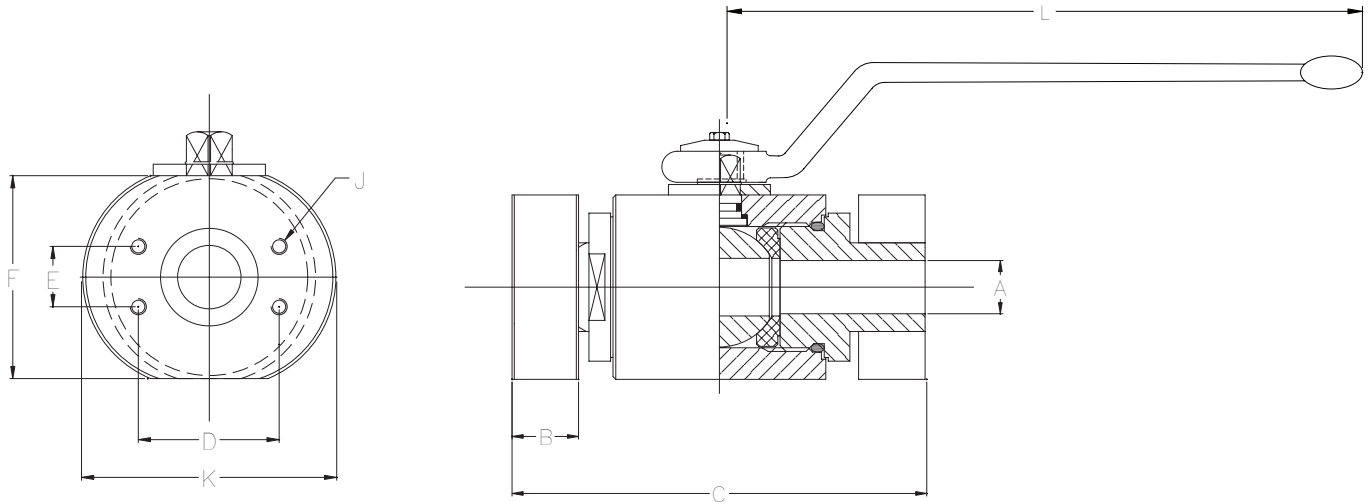
MAXIMUM & MINIMUM WORKING TEMPERATURES FOR SEAL MATERIALS



ABF Series / Two-Way Round Body Flat Face



- Carbon steel construction with Silver Trivalent plating
- 316 stainless steel available from stock
- Maximum working pressure of up to 5000 PSI
- POM seats & Buna O-rings standard on carbon steel valves
- Optional seal materials available for extreme temperature applications & fluid compatibility (*Consult Factory*)



Standard handle supplied is C92501Z. Refer to page 33 for details.

	SERIES	PSI Max	A Bore	B	C	D	E	F	J	K	L	Weight
CODE 61	ABF3#20	4000	1.26	1.26	6.77	2.31	1.19	3.66	7/16-14	4.13	11.69	14.3 lbs
	ABF3#24	3000	1.50	1.26	6.97	2.75	1.41	4.21	1/2-13	4.72	11.69	20.6 lbs
	ABF3#32	3000	1.89	1.34	7.72	3.06	1.69	4.49	1/2-13	5.71	11.69	28.0 lbs
CODE 62	ABF6#20	5000	1.26	1.26	6.77	2.63	1.25	3.66	1/2-13	4.13	11.69	14.2 lbs
	ABF6#24	5000	1.50	1.26	6.97	3.13	1.44	4.21	5/8-11	4.72	11.69	20.3 lbs
	ABF6#32	5000	1.89	1.34	7.72	3.81	1.75	4.49	3/4-10	5.71	11.69	27.6 lbs

Model Code Breakdown

ABF3 #32 - 1 1 D B _

Valve Series •

ABF3	Code 61
ABF6	Code 62

Connection Size •

Body & Adapter Material •

1	Carbon Steel
2	316 Stainless Steel

Ball & Stem Material •

1	Carbon Steel
2	316 Stainless Steel

• Locking Kit or
Optional Handle Code
(See pages 32 & 33)

• Adapter & Stem Seals

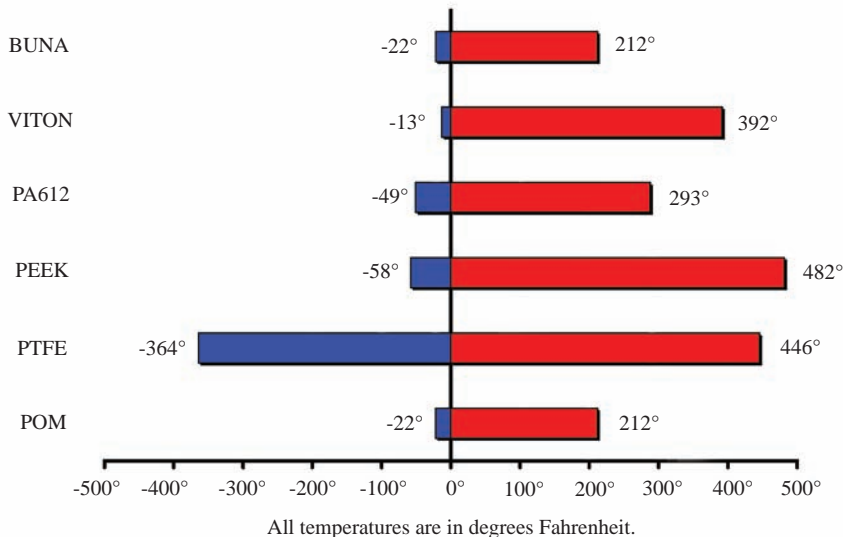
B	Buna- Standard
V	Viton (Std on S/S)

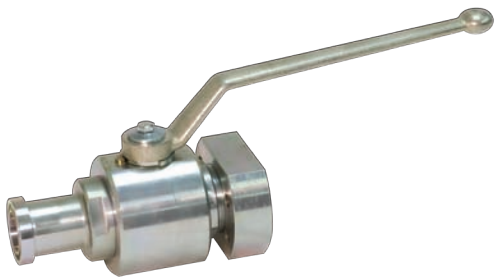
• Ball & Stem Seats

D	POM- Standard
P	PEEK
N	PA612
X	PTFE w/metallic insert

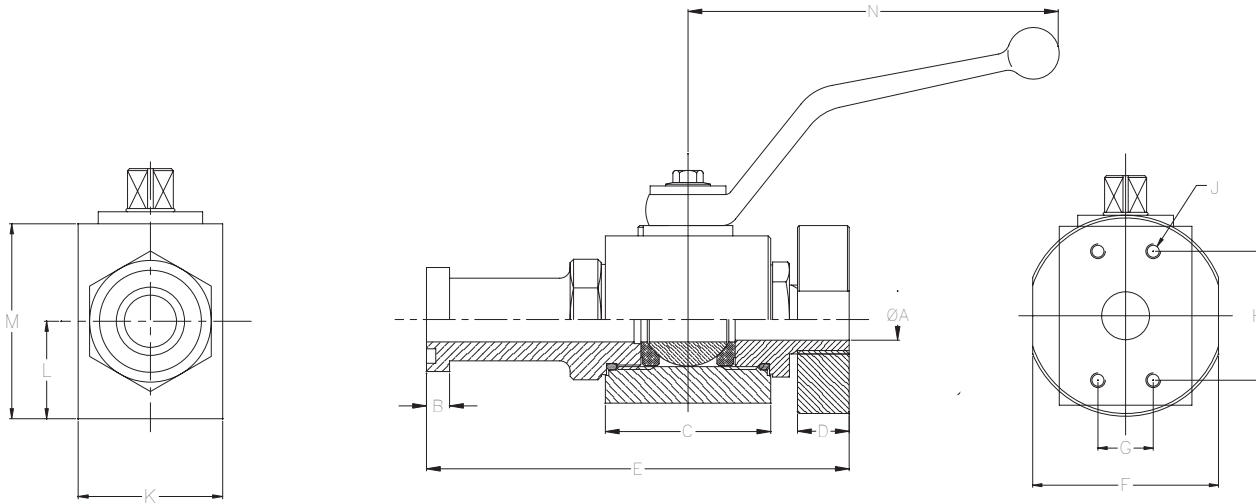
- PTFE seats reduce pressure ratings. Consult factory for applications requiring PTFE seats.
- Please consult your system's seal manufacturer for recommendation of seal selection, as Anchor Fluid Power does not accept responsibility for seal selection.

MAXIMUM & MINIMUM WORKING TEMPERATURES FOR SEAL MATERIALS





- Flange Head X Flat-Face connections for insertion in between existing flange joints.
- Ideal for flange mounting anywhere a flange connection exists or where hoses are already connected.
- Carbon steel construction with Silver Trivalent plating
- 316 stainless steel available
- Maximum working pressure of up to 6000 PSI
- POM seats & Buna O-rings standard on carbon steel valves
- Optional seal materials available for extreme temperature applications & fluid compatibility (*Consult Factory*)



Standard handles supplied are:

- #8
- #12 - #16
- #20 - #32

- C1010ZB
- C1200ZB
- C92501Z

Refer to page 33 for details.

SERIES	PSI MAX	A BORE	B	C	D	E	F	G	H	J	K	L	M	N
AES/F3#8	5000	.51	.27	1.89	.87	5.3	1.89	.69	1.50	5/16-18	1.46	.71	1.89	4.31
AES/F6#8	6000	.51	.31	1.89	.87	5.3	1.89	.72	1.59	5/16-18	1.46	.71	1.89	4.31
AES/F3#12	5000	.75	.27	2.44	.91	5.8	2.36	.87	1.87	3/8-16	1.77	.91	2.36	7.00
AES/F6#12	6000	.79	.35	2.44	.91	6.1	2.36	.94	2.00	3/8-16	1.77	.91	2.36	7.00
AES/F3#16	5000	.98	.32	2.60	1.06	6.4	2.76	1.03	2.06	3/8-16	2.17	1.14	2.76	7.00
AES/F6#16	5000	.98	.38	2.60	1.06	6.8	2.76	1.09	2.25	7/16-14	2.17	1.14	2.76	7.00
ABS/F3#20	4000	1.26	.32	2.96	1.26	7.2	3.07	1.19	2.31	7/16-14	3.46	1.65	3.25	12.31
ABS/F6#20	5000	1.26	.41	2.96	1.26	7.8	3.07	1.25	2.63	1/2-13	3.46	1.65	3.25	12.31
ABS/F3#24	3000	1.50	.32	3.36	1.26	8.0	3.78	1.41	2.75	1/2-13	4.02	1.89	3.86	12.31
ABS/F6#24	5000	1.50	.50	3.36	1.26	9.0	3.78	1.44	3.13	5/8-11	4.02	1.89	3.86	12.31
ABS/F3#32	3000	1.89	.38	3.54	1.34	8.4	4.72	1.69	3.06	1/2-13	4.29	2.03	4.06	12.31
ABS/F6#32	5000	1.89	.50	3.54	1.34	9.5	4.72	1.75	3.81	3/4-10	4.29	2.03	4.06	12.31

Model Code Breakdown

AES/F3 #8 - 1 1 D B

Valve Series •

AES/F3	Code 61 Block Body
AES/F6	Code 62 Block Body
ABS/F3	Code 61 Round Body
ABS/F6	Code 62 Round Body

Connection Size •

Body & Adapter Material •

1	Carbon Steel
2	316 Stainless Steel

Ball & Stem Material •

1	Carbon Steel
2	316 Stainless Steel

• Locking Kit or
Optional Handle Code
(See pages 32 & 33)

• Adapter & Stem Seals

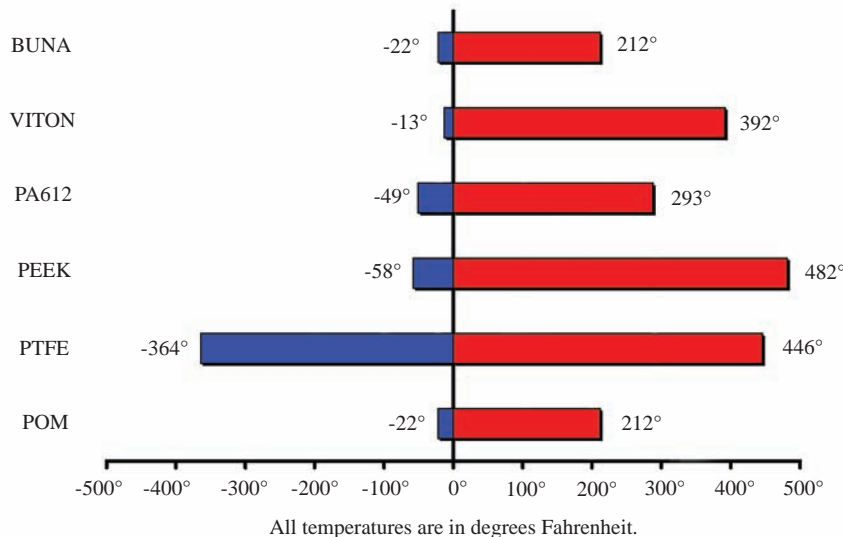
B	Buna- Standard
V	Viton (Std on S/S)

• Ball & Stem Seats

D	POM- Standard
P	PEEK
N	PA612
X	PTFE w/metallic insert

- PTFE seats reduce pressure ratings. Consult factory for applications requiring PTFE seats.
- Please consult your system's seal manufacturer for recommendation of seal selection, as Anchor Fluid Power does not accept responsibility for seal selection.

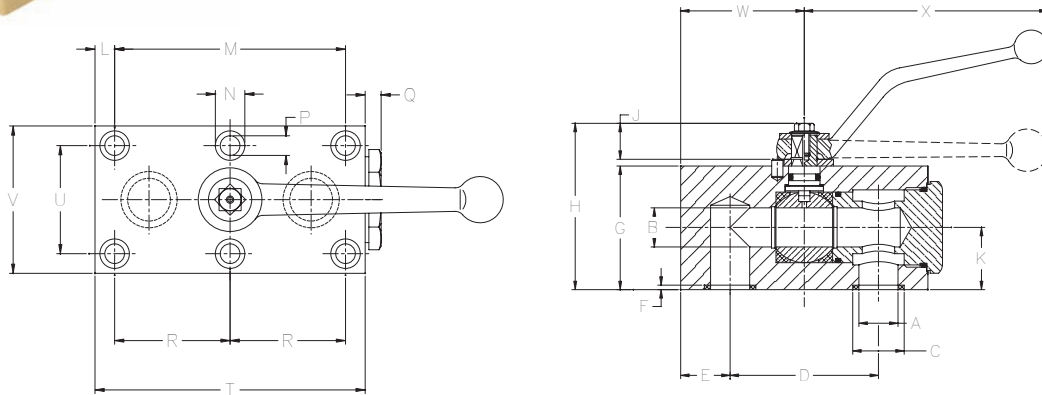
MAXIMUM & MINIMUM WORKING TEMPERATURES FOR SEAL MATERIALS



APK Series / Two-Way Manifold Mount



- Carbon steel construction with Zinc Dichromate plating
- Maximum working pressure of up to 7250 PSI
- POM seats & Buna O-rings standard on carbon steel valves
- Optional seal materials available for extreme temperature applications & fluid compatibility (*Consult Factory*)



Standard handles supplied are:
Refer to page 33 for details.

#4 - #8 C1010ZB
#12 - #16 C1200ZB
#20 - #24 C92501Z

SERIES	PSI MAX	A	B	C	D	E	F	G	H	J	K
APK2 #4	7250	.24	.24	.464	1.377	.37	.074	1.38	1.89	.43	.75
APK2 #6	7250	.39	.39	.586	1.734	.39	.074	1.77	2.36	.43	.94
APK2 #8	5800	.51	.51	.980	2.283	.71	.074	2.17	2.76	.43	1.34
APK2 #12	5075	.79	.79	1.141	2.716	.83	.078	2.76	3.46	.51	1.50
APK2 #16	5075	.98	.98	1.374	3.188	.94	.090	3.15	3.86	.51	1.80
APK2 #20	5075	1.26	1.26	1.574	3.779	1.10	.078	3.94	4.84	.51	2.17
APK2 #24	5075	1.46	1.57	1.877	4.409	1.14	.090	4.33	5.24	.51	2.28

SERIES	L	M	N	P	Q	R	T	U	V	W	X
APK2 #4	.354	1.377	.413	.255	.28	*N/A	2.28	1.062	1.57	1.06	4.31
APK2 #6	.295	2.165	.531	.334	.39	*N/A	2.76	1.574	2.17	1.14	4.31
APK2 #8	.374	3.267	.531	.334	.39	1.633	3.94	1.771	2.36	1.69	4.31
APK2 #12	.452	3.818	.649	.413	.39	1.909	4.65	2.007	2.76	2.05	7.00
APK2 #16	.354	4.527	.649	.413	.47	2.263	5.31	2.362	3.15	2.44	7.00
APK2 #20	.433	5.354	.748	.511	.59	2.677	6.50	3.070	3.94	2.95	11.81
APK2 #24	1.141	4.409	.984	.649	.67	2.204	7.28	3.740	5.12	3.39	11.81

*Valve sizes #4 & #6 only have (4) mounting holes.

Model Code Breakdown

APK2 #20 - 1 1 D B

Valve Series •

APK2	Manifold Mount 2-way
------	----------------------

Connection Size •

Body & Adapter Material •

1	Carbon Steel
2	316 Stainless Steel

Ball & Stem Material •

1	Carbon Steel
2	316 Stainless Steel

• Locking Kit or
Optional Handle Code
(See pages 32 & 33)

• Adapter & Stem Seals

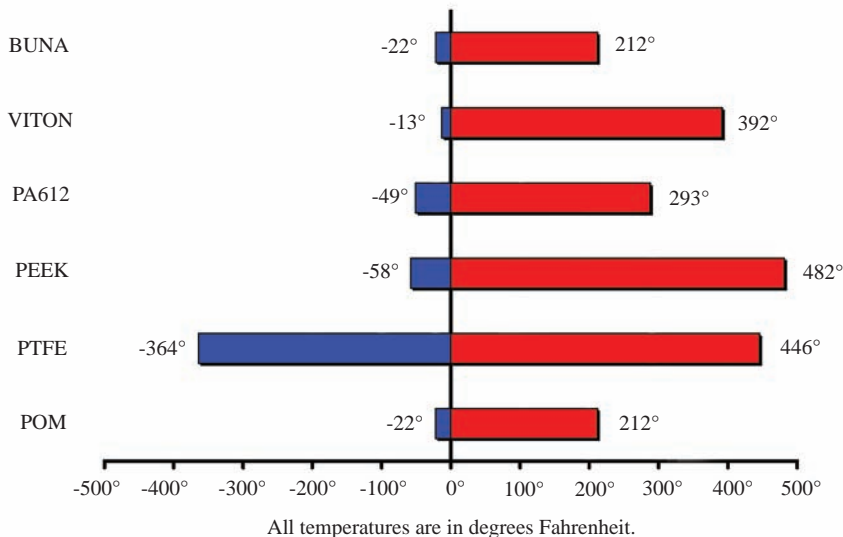
B	Buna- Standard
V	Viton (Std on S/S)

• Ball & Stem Seats

D	POM- Standard
P	PEEK
N	PA612
X	PTFE w/metallic insert

- PTFE seats reduce pressure ratings. Consult factory for applications requiring PTFE seats.
- Please consult your system's seal manufacturer for recommendation of seal selection, as Anchor Fluid Power does not accept responsibility for seal selection.

MAXIMUM & MINIMUM WORKING TEMPERATURES FOR SEAL MATERIALS

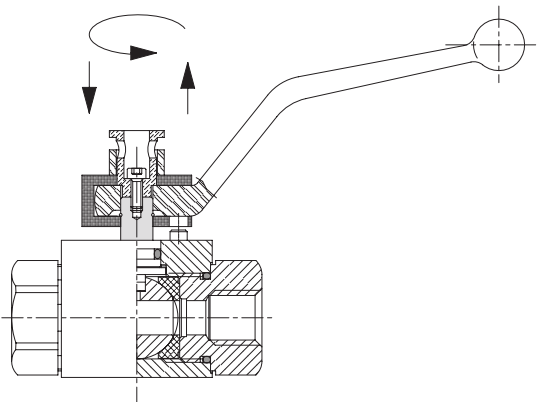
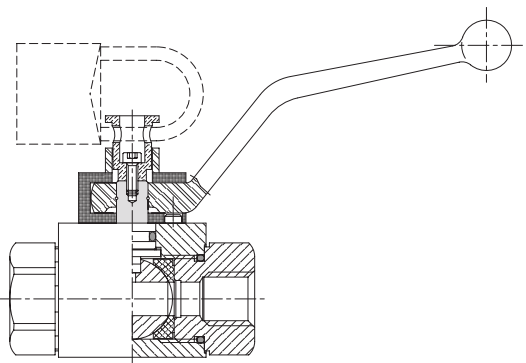


LOCKING KITS AVAILABLE FROM STOCK

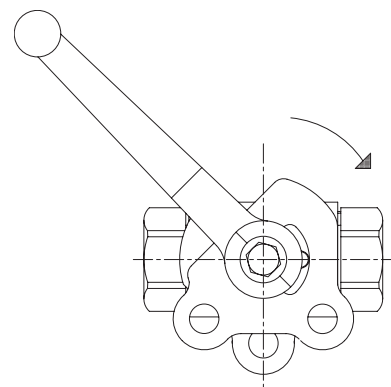
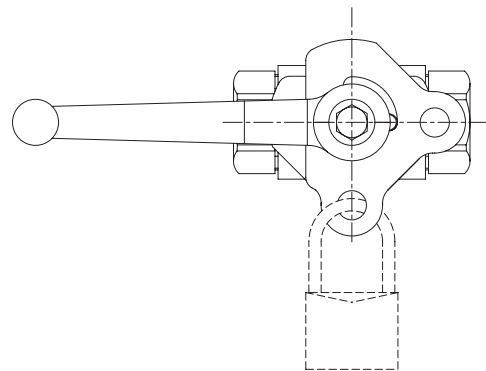
Part Number	Valve Size	Material	Suffix*
LK6	1/8" - 1/2"	Carbon Steel	L
LK20	3/4" - 1"	Carbon Steel	L
LK32	1 1/4" - 2"	Carbon Steel	L
LK6-S/S	1/8" - 1/2"	Stainless Steel	L
LK20-S/S	3/4" - 1"	Stainless Steel	L
LK32-S/S	1 1/4" - 2"	Stainless Steel	L
G6	1/8" - 1/2"	Carbon Steel	G
G20	3/4" - 2"	Carbon Steel	G

*Add this suffix to the end of the valve part # to receive the corresponding locking kit for that size valve- *installed at the factory*. Carbon steel valves receive carbon steel locking kits. Stainless steel valves receive stainless locking kits.

“G” Style Lock



“L” Style Lock



Proprietary tamper proof fasteners are available upon request making locking kit removal more difficult. Consult factory for details concerning tamper proof fastener options.

Handles for 1/8" through 1/2" Valves

C0020ZB
Carbon Steel
Fits 1/8" - 1/2" Valves
5 - 7/8" Long
Code "A"



C1010ZB
Carbon Steel
Fits 1/8" - 1/2" Valves
4 - 1/4" Long



C10106H
Stainless Steel
Fits 1/8" - 1/2" Valves
4 - 1/4" Long
Code "C"

Handles for 3/4" through 1" Valves

C1200ZB
Carbon Steel
Fits 3/4" - 2" Valves
7" Long
Code "Z"



C69206H
Stainless Steel
Fits 3/4" - 1" Valves
7 - 7/8" Long
Code "W"



C2950AV
Aluminum
Fits 3/4" - 1" Valves
8" Long
Code "Y"

Handles for 1 1/4" through 2" Valves

C81302B
Carbon Steel
Fits 1 1/4" - 2" Valves
11 - 3/4" Long
Code "E"

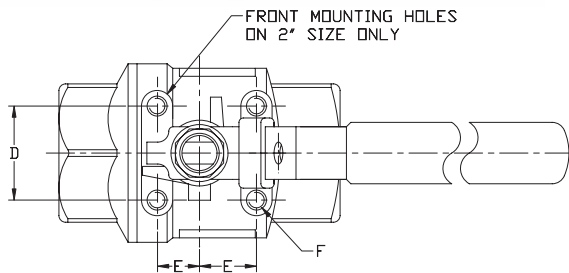


C92501Z
Carbon Steel
Fits 1 1/4" - 2" Valves
12 - 1/8" Long
Code "H"

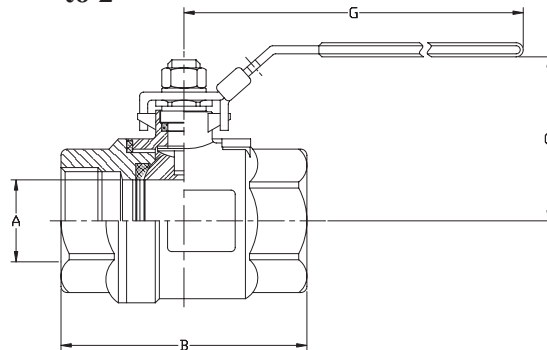
Dimensions are approximate and are subject to change without notice. For exact dimensional info, please consult the factory with the specific handle part #.



- 1000 PSI rating on all sizes
- All stainless steel construction
- Locking handles standard
- Ideal for suction, pressure and return lines
- Available in NPT & SAE threads
- Mounting holes standard on SAE #16 - #32
- Mounting holes optional on all other valves up to 2"



SHOWN WITH OPTIONAL MOUNTING HOLES



Model Code:

LV2B **N** **1/2"** -2T **-MH**

Thread type (**N**-NPT; **S**-SAE)

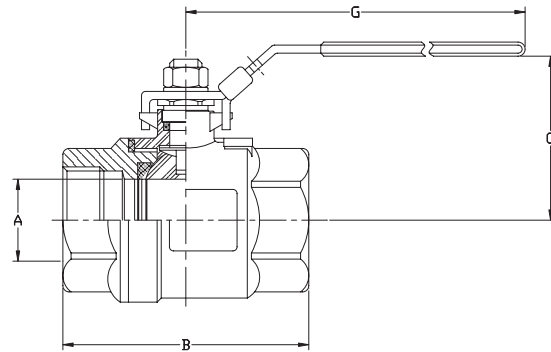
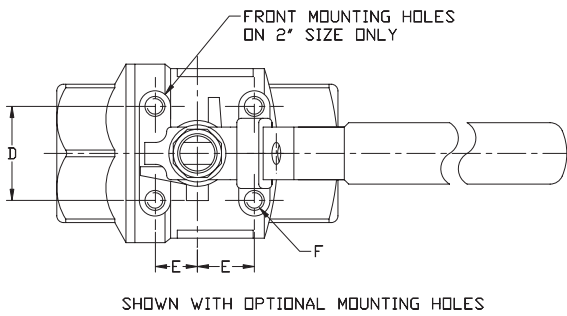
Thread size (Ex. **N1/2"**; **S#8**)

Optional Mounting Holes

	SIZE	A	B	C	D	E	F UNC	G
NPT	1/4"	.36	2.13	2.13	1.12	.49	10-24	4.33
	3/8"	.50	2.13	2.17	1.12	.49	10-24	4.33
	1/2"	.59	2.24	2.28	1.12	.49	10-24	4.53
	3/4"	.79	2.68	2.40	1.12	.49	10-24	4.53
	1"	.98	3.15	3.03	1.38	.91	1/4-20	5.04
	1-1/4"	1.26	3.58	3.19	1.48	1.00	1/4-20	5.04
	1-1/2"	1.50	4.06	3.54	1.48	1.00	1/4-20	6.10
	2"	1.97	4.88	4.25	1.50	1.00	1/4-20	6.10
	2-1/2"	2.56	6.30	5.20	N/A	N/A	N/A	9.06
3"	3.15	7.28	5.71	N/A	N/A	N/A	9.06	
SAE	1/4"	.35	2.40	2.13	1.12	.49	10-24	4.33
	3/8"	.47	2.40	2.17	1.12	.49	10-24	4.33
	1/2"	.59	2.52	2.28	1.12	.49	10-24	4.53
	3/4"	.79	3.23	2.40	1.12	.49	10-24	4.53
	1"	.98	3.62	3.03	1.38	.91	1/4-20	5.04
	1-1/4"	1.26	3.96	3.19	1.48	1.00	1/4-20	5.04
	1-1/2"	1.50	4.23	3.54	1.48	1.00	1/4-20	6.10
	2"	1.97	4.90	4.25	1.50	1.00	1/4-20	6.10

COMPONENT MATERIALS		
COMPONENT	MATERIAL	QTY
VALVE BODY	ASTM A351 Gr CF8M	1
TAILPIECE	ASTM A351 Gr CF8M	1
BALL	ASTM A351 Gr CF8M	1
STEM	316	1
BALL SEAT	PTFE	2
STEM SEAT	PTFE	1
STEM PACKING	PTFE	1
STEM GLAND	304	1
HANDLE	304	1
STEM LOCK WASHER	304	1
STEM NUT	304	1
HANDLE SLEEVE	VINYL	1
LOCK	304	1

- 2000 PSI rating on all sizes
- All stainless steel construction
- Locking handles standard
- Mounting holes optional on all sizes
- Ideal for suction, pressure and return lines
- Available in NPT & SAE threads



Model Code:

MV2B **N** **1/2"** -2T **-MH**

Thread type (**N**-NPT; **S**-SAE)

Thread size (Ex. **N1/2"**; **S#8**)

Optional Mounting Holes

	SIZE	A	B	C	D	E	F UNC	G
NPT	1/4"	.36	2.13	2.13	1.12	.49	10-24	4.33
	3/8"	.50	2.13	2.17	1.12	.49	10-24	4.33
	1/2"	.59	2.24	2.28	1.12	.49	10-24	4.53
	3/4"	.79	2.76	2.40	1.12	.49	10-24	4.53
	1"	.98	3.25	3.03	1.38	.91	1/4-20	5.04
	1-1/4"	1.26	3.58	3.19	1.48	1.00	1/4-20	5.04
	1-1/2"	1.50	4.06	3.54	1.48	1.00	1/4-20	6.10
	2"	1.97	4.90	4.25	1.50	1.00	1/4-20	6.10
SAE	1/4"	.35	2.40	2.13	1.12	.49	10-24	4.33
	3/8"	.47	2.40	2.17	1.12	.49	10-24	4.33
	1/2"	.59	2.52	2.28	1.12	.49	10-24	4.53
	3/4"	.79	3.23	2.40	1.12	.49	10-24	4.53
	1"	.98	3.62	3.03	1.38	.91	1/4-20	5.04
	1-1/4"	1.26	3.96	3.19	1.48	1.00	1/4-20	5.04
	1-1/2"	1.50	4.23	3.54	1.48	1.00	1/4-20	6.10
	2"	1.97	4.90	4.25	1.50	1.00	1/4-20	6.10

COMPONENT MATERIALS		
COMPONENT	MATERIAL	QTY
VALVE BODY	ASTM A351 Gr CF8M	1
TAILPIECE	ASTM A351 Gr CF8M	1
BALL	ASTM A351 Gr CF8M	1
STEM	316	1
BALL SEAT	PTFE	2
STEM SEAT	PTFE	1
STEM PACKING	PTFE	1
STEM GLAND	304	1
HANDLE	304	1
STEM LOCK WASHER	304	1
STEM NUT	304	1
HANDLE SLEEVE	VINYL	1
LOCK	304	1

LIMITED WARRANTY

Anchor Fluid Power warrants only that the products conform to the dimensions set forth in its catalog at the time of sale. Catalog dimensions are subject to change. This warranty is made in lieu of all other warranties, expressed or implied. All other warranties, expressed or implied, **INCLUDING ANY WARRANTY OF MERCHANTABILITY OR FITNESS FOR A PARTICULAR PURPOSE**, are excluded and will not apply to the products sold. If the buyer disassembles, repairs or modifies the unit in any way warranty is no longer valid.

Buyer must obtain written authorization from Anchor Fluid Power prior to returning products. Non-conforming products must be returned to Anchor Fluid Power within 30 days of delivery to buyer.

Internal material defects may not be commercially detectable. Under no circumstances will Anchor Fluid Power be liable for any damages or claims with respect to soundness of material.

No employee, agent, or representative of Anchor Fluid Power has the authority to vary the terms of the warranty described herein, or to extend this warranty to anyone other than Anchor Fluid Power's direct customers.

LIMITATION OF DAMAGES

Buyer's sole and exclusive remedy against Anchor Fluid Power for nonconforming products will be the furnishing of replacement products (F.O.B. Anchor Fluid Power) or refund or credit.

Anchor Fluid Power shall not be liable to buyer, its employees, agents, customers or to any third party for any claim, loss or damage, general or special, incidental or consequential, including but not limited to death, personal injury, property damage, lost sales or lost profit, which in any way arises out of or in connection with the sale of any product or the use or nonuse of such products, even if Anchor Fluid Power has been advised of the possibility of such loss or damage.

BALL VALVE PRESSURE SPECIFICATIONS

Anchor Fluid Power ball valves are tested in accordance with API 598, Eighth Edition, May 2004 standards. End connections are manufactured in accordance with SAE J1926/1, SAE J1453/B and / or ANSI B.1.20.1 specifications.